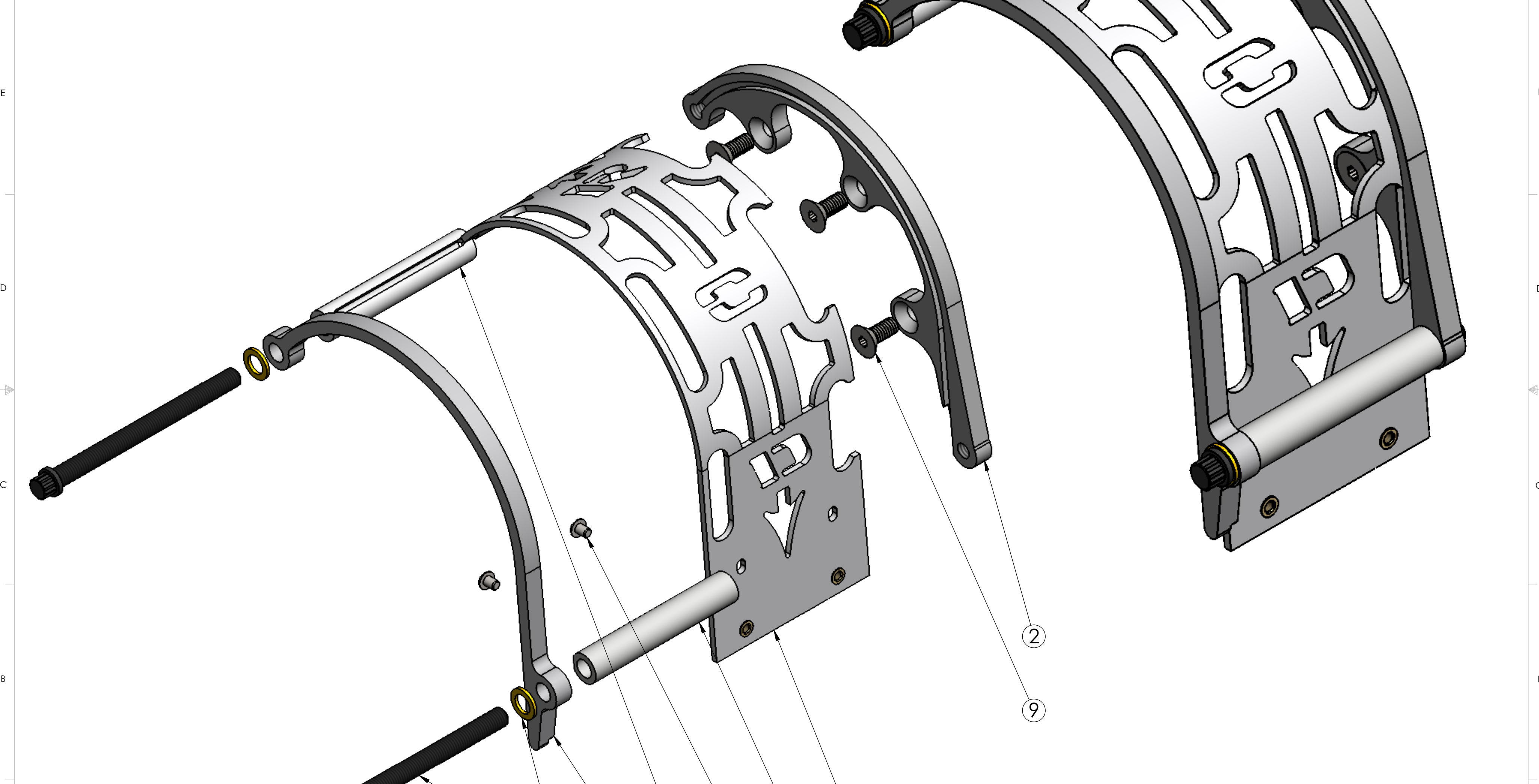



ITEM	PART NO.	DESCRIPTION	QTY.
1	103507-01	FRONT BRACE ALL BELT GUARDS	1
2	103507-17	FACE PLATE FOR SNOUT CLAMP BLOWER BELT GUARD	1
3	103512-05	TOP GUARD SSI 3 HOLE	1
4	103517-01	STANDOFF BELT GUARD SLOTTED	1
5	103517-02	STANDOFF BELT GUARD TAPPED	1
6	352503-06	3/8 AN WASHER	2
7	356337-72	3/8-16 X 4.50 12PT	2
8	356510-04	BHCS 10-32 x .25	2
9	357131-12	0.3125-18 X 0.75 TORX FLAT HEAD BOLT	3



NAME	DATE	UNLESS OTHERWISE SPECIFIED:	 <b>ENGINEERING INC.</b> TEL: 530-292-3133 - FAX: 530-292-3738
DRAWN BY	Steve	11/19/2005	
WEIGHT:	1.261	DIMENSIONS ARE IN INCHES TOLERANCES: .XX = ± .005 .XXX = ± .001 .XXXX = ± .0003	
MATERIAL:		ANGULAR: ± .5° BREAK SHARP EDGES .005 MAX	
FINISH:	BLOWER BELT GUARD SNOUT MOUNTED		
HEAT TREAT:	PART. NO. 103507-0017		
DWG LOCATION: F:\Doc_Control\103507-0017 BLOWER BELT GUARD SNOUT MOUNTED			ENGINEERING INCORPORATED SIZE C REV
DWG FILE: 103507-0017 BLOWER BELT GUARD SNOUT MOUNTED			SCALE: 1:1
MODEL LOCATION: F:\Doc_Control\103507-0017 BLOWER BELT GUARD SNOUT MOUNTED			SHEET 1 OF 1
MODEL FILE: 103507-0017 BLOWER BELT GUARD SNOUT MOUNTED PART. NO. 103507-0017			C SHEET 1 OF 1